

# FLAMES of WAR

Mapping fire impact on south Lebanon's forests & agricultural areas using dNBR

## Methodology used:



## Tools used:



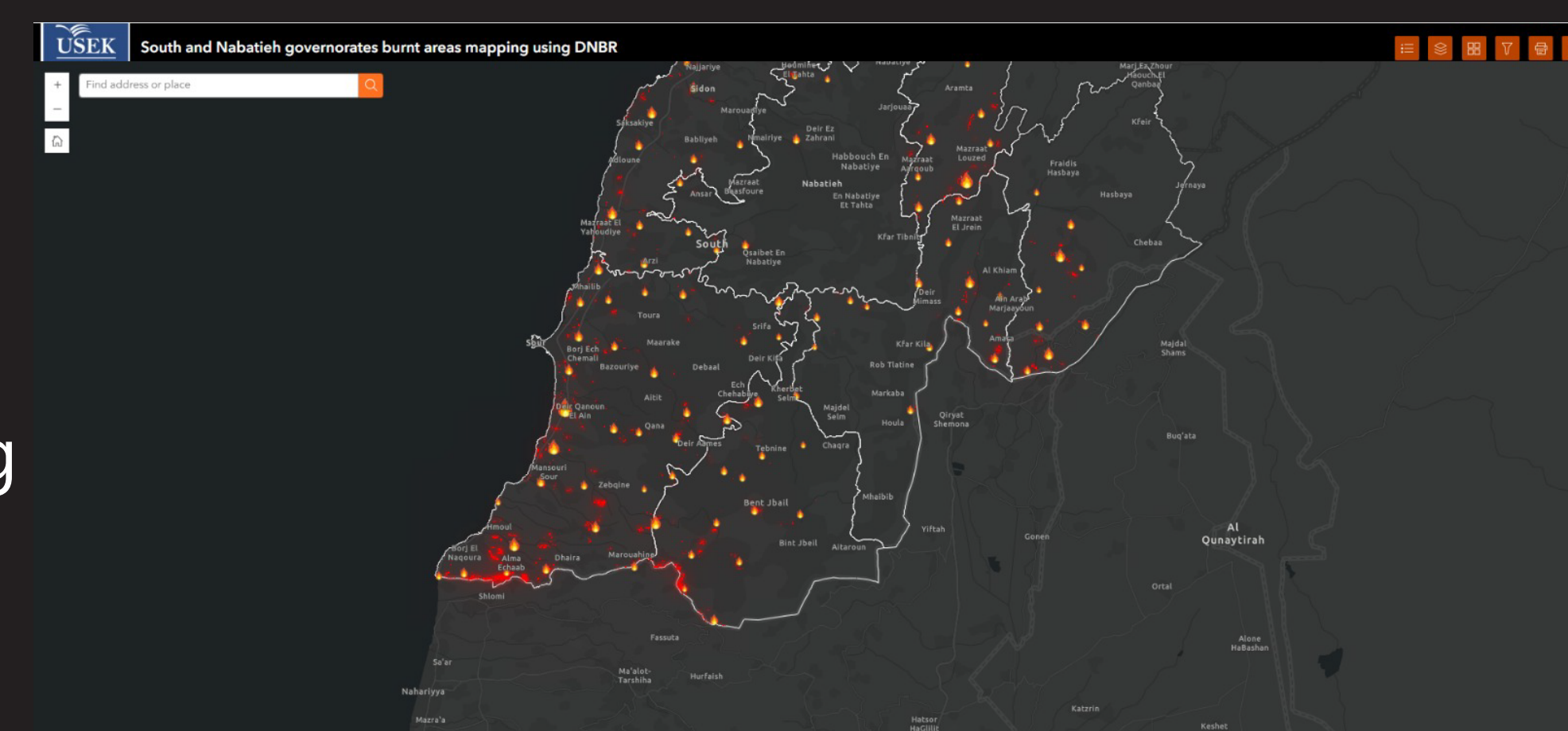
## Part 1



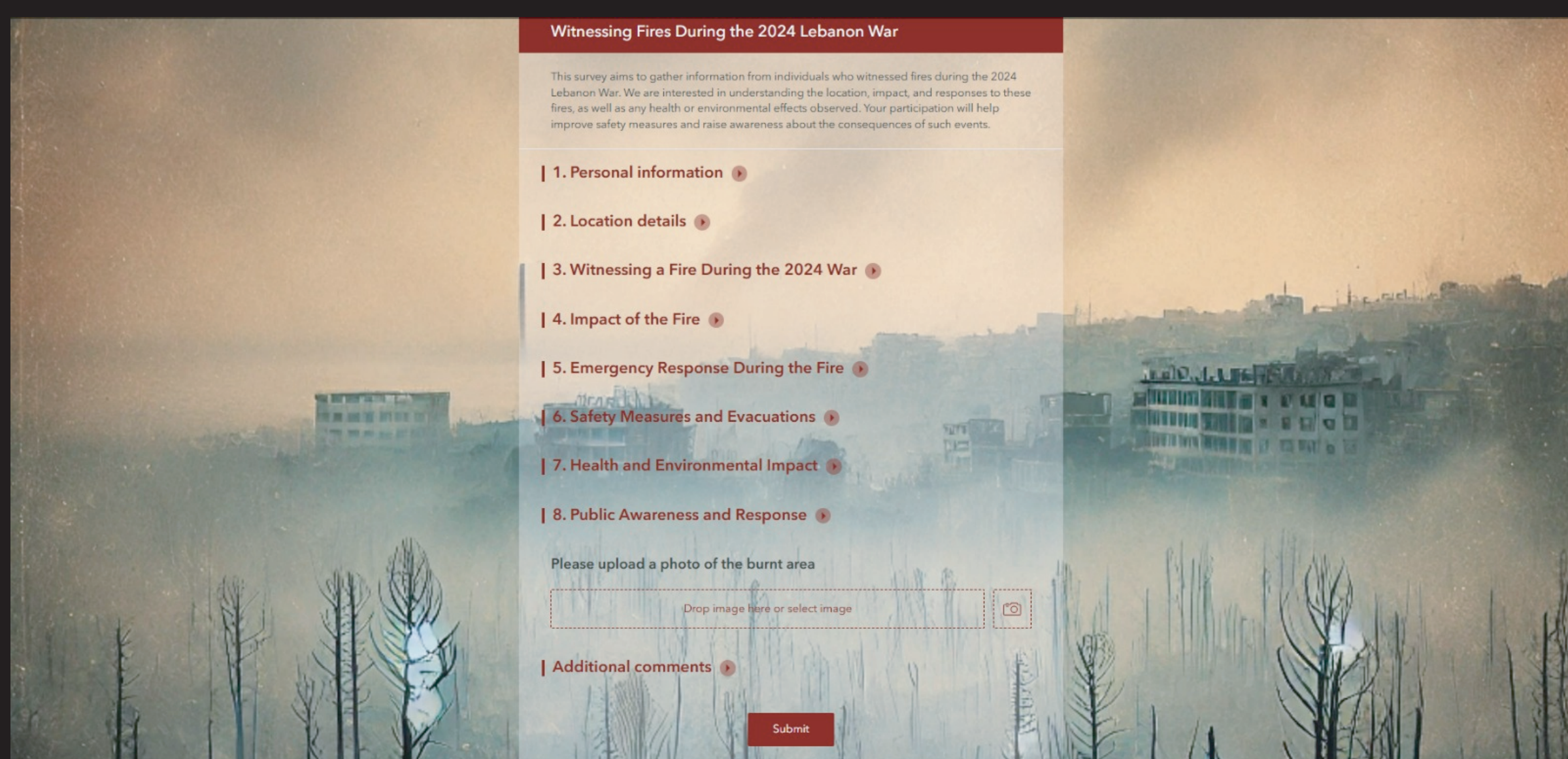
The Storymap presents key data, offering a clear and interactive overview of Lebanon's agricultural impact from the 2024 war.

## Part 2

The Webmap uses satellite imagery and dNBR to highlight fire-affected areas, providing an interactive tool for analyzing Lebanon's agricultural damage.



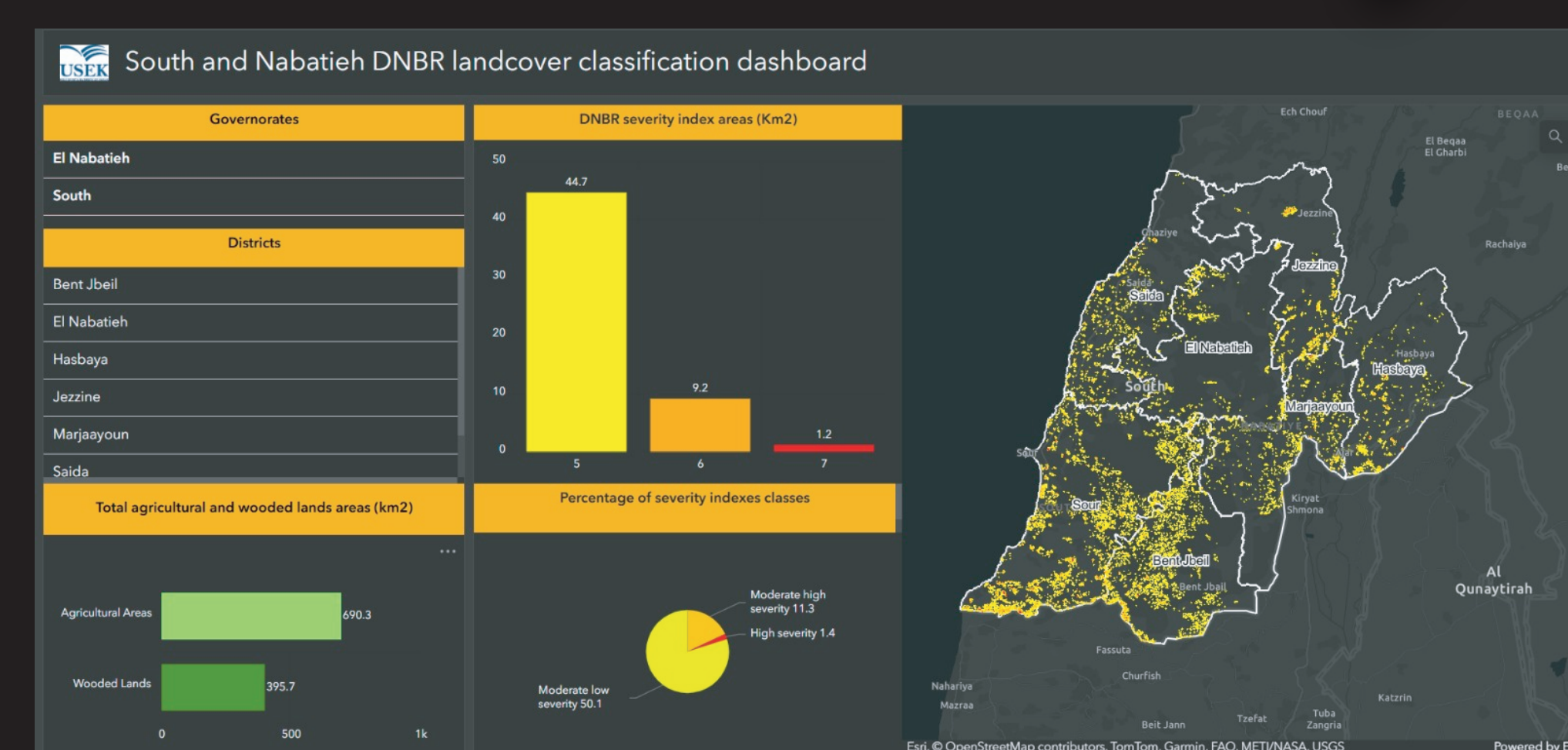
## Part 4



The Survey collected valuable input from farmers and local communities, helping to assess the real-world impact of the war on Lebanon's agriculture. It complemented satellite data, offering a more comprehensive understanding of the damage.

## Part 3

The Dashboard consolidates key data and visualizations, offering real-time insights into the impact of the 2024 war on Lebanon's agriculture, including fire damage and vegetation loss.



## Part 5

Scan the QR codes below for the detailed presentations!

